



The sky for the month of may 2018



Date de mise en ligne : jeudi 3 mai 2018

Observatoire de Paris - PSL Centre de recherche en astronomie et
astrophysique

Sky maps looking North and South in Paris, on the 15th of may 2018, at 23 h civil time.



Carte du ciel en direction sud - mai 2018



Carte du ciel en direction nord - mai 2018

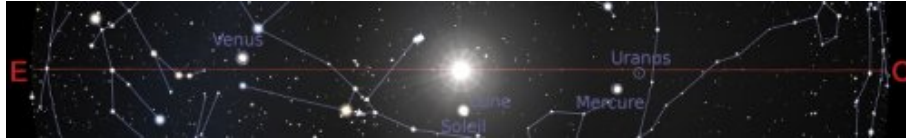
These sky maps show the bright stars and planets visible from the northern hemisphere, looking South and North, on may 15th 201 ! (23h). The vertical line corresponds to the projection on the sky of the local meridian. The red arc on the Southern horizon represents the ecliptic (the annual path of the Sun).

The constellations which can be seen on these maps are, in alphabetical order of their acronyms :

Andromède (And), le Bélier (Ari), le Bouvier (Boo), le Cocher (Aur), la Girafe (Cam), Cassiopée (Cas), Céphée (Cep), la Baleine (Cet), le Grand Chien (CMa), le Petit Chien (CMi), le Cancer (Cnc), les Chiens de Chasse (CVn), le Cygne (Cyg), le Dragon (Dra), Eridan (Eri), les Gémeaux (Gem), l'Hydre femelle (Hya), le Léopard (Lac), le Lion (Leo), le Lièvre (Lep), le Lynx (Lyn), la Licorne (Mon), Orion (Ori), Pégase (Peg), Persée (Per), la Grande Ourse (UMa), la Petite Ourse (UMi), les Poissons (Psc), la Poupe (Pup), le Sextant (Sex), le Taureau (Tau), le Triangle (Tri).

In its apparent motion along the ecliptic, the Sun is accompanied by several neighboring planets. Those which are to the East can be seen at sunset and at the beginning of the night, depending on their elongation and magnitude, while those which are to the West will be visible at the end of the night and at sunrise, again depending on their elongation and magnitude. The following figure shows the configuration for may 15th, 2018.

The sky for the month of may 2018



Course apparente du Soleil sur l'écliptique - mai 2018

The sky maps were created using the free software Stellarium.